

Across the Joplin Region, residents, organizations and community leaders are coming together to shape a healthier future for our region.

Here's your first progress report on an exciting, new initiative that has the potential to better our community's future for generations to come!

The Thrive Project, led by One Joplin, is a community-driven effort to identify the biggest barriers to health and develop practical solutions that improve quality of life for everyone.

Over the past several months, hundreds of residents have shared their experiences, concerns and ideas. Their voices are now helping guide the next steps in building a stronger, more connected community.



WHAT WE'VE HEARD SO FAR

FALL 2025

Community Survey

405 RESIDENTS PARTICIPATED

Key insights include:

- 79% long-time Joplin residents
- 69% employed full-time
- 34% from distressed ZIP codes
- 38% households with children
- 16% households with seniors

Across nearly every group, access to healthy food and fresh produce ranked as the most desired community asset.

Other top priorities included:

- Affordable and safe housing
- Mental health and addiction services
- Physical healthcare access
- Walkability and transportation
- Emergency assistance and family supports

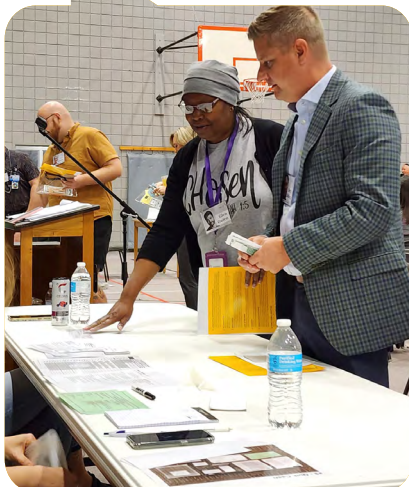
FEBRUARY 2026

Focus Groups

To deepen the conversation, Thrive Joplin hosted **10 FOCUS GROUPS WITH MORE THAN 110 PARTICIPANTS**, generating nearly 300 ideas and community assets.

Participants highlighted both strong existing resources and opportunities to strengthen areas such as:

- Food access and recreation
- Affordable housing
- Crisis response and recovery systems
- Coordination between community services
- Childcare and family support resources



MARCH 2026

One Joplin hosted a **JOPLIN FAITH COMMUNITY LUNCHEON**, bringing together 50 Faith Leaders and Ministry Team members to learn how churches and faith-based organizations could engage in the Thrive Project.

4 Pillars Guiding the Work

Community input and research have helped shape four interconnected focus areas for Thrive Project:



FOOD, NUTRITION & PHYSICAL HEALTH

- Access to healthy foods
- Nutrition education
- Physical activity, recreation, and fitness
- Active transportation and safe routes



SAFE & AFFORDABLE HOUSING

- Housing quality and habitability
- Housing availability and affordability
- Safe neighborhoods
- Housing stability and homelessness prevention



MENTAL HEALTH & SUBSTANCE USE

- Mental health promotion and treatment
- Substance use and recovery
- Crisis response and stabilization
- Prevention and early intervention



FAMILY SUPPORT & SOCIAL CONNECTIONS

- Family resources and navigation
- Childcare and early childcare supports
- Caregiving and senior support
- Community engagement and social connection

Together, these pillars address the many factors that influence health, including housing, transportation, environment and economic opportunity.



Why This Matters

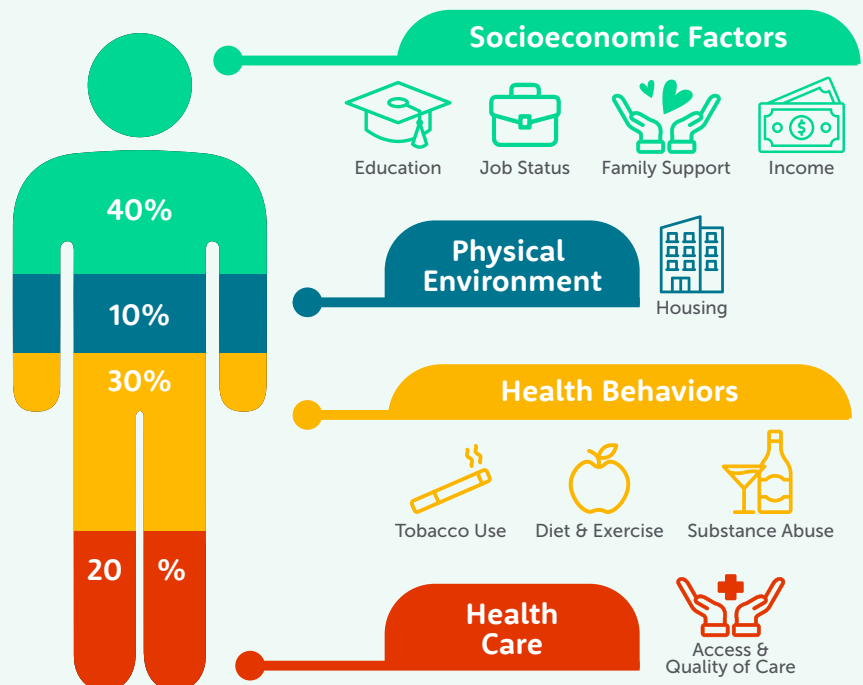
Preliminary research shows that Jasper County and the surrounding area face several health challenges, including:

- Higher rates of chronic health conditions
- Significant mental and behavioral health challenges
- Lower life expectancy and higher rates of early death

Research also shows that health is shaped by more than healthcare alone:

- **40%** social and economic factors
- **30%** health behaviors
- **20%** healthcare access
- **10%** physical environment

Improving these outcomes requires community-wide collaboration, which is exactly what The Thrive Project is designed to foster.



Building a **THRIVING** Joplin Region, Together!



WHAT'S NEXT?

Using the research and community input gathered so far, TEconomy is now developing the **Thrive Blueprint**—a clear, public-facing roadmap outlining: Actionable strategies, Data-informed recommendations, and Opportunities for regional collaboration and investment.

The Blueprint will guide the next phase of work to improve health and well-being across the Joplin community.

REGISTER TODAY!

Thrive Joplin Community Summit

APRIL 16, 2026
8:30 AM – 12:30 PM
JOPLIN EXPO CENTER

onejoplin.com/thrive-joplin-project

Collaborative momentum is key to the success of the Thrive Joplin Project. This regional initiative includes civic groups, faith organizations, nonprofit agencies, and businesses serving Joplin, Webb City, Carterville, and Carl Junction.

Join community members, organizations and leaders as we:

- Share key findings from the research process
- Introduce the Thrive Joplin Blueprint
- Participate in breakout discussions focused on implementation
- Explore ways to get involved moving forward

A key initial step in the Thrive Project, this Summit is designed to bring together those best positioned to help those in need.



Be Part of Joplin's Next Chapter.

Thrive Joplin is built on collaboration, and everyone has a role to play. Whether you're a community leader, advocate, service provider, school representative or a board member, your voice can help shape the future of Joplin!

QUESTIONS OR INTERESTED IN GETTING INVOLVED? ThriveJoplin@OneJoplin.com